

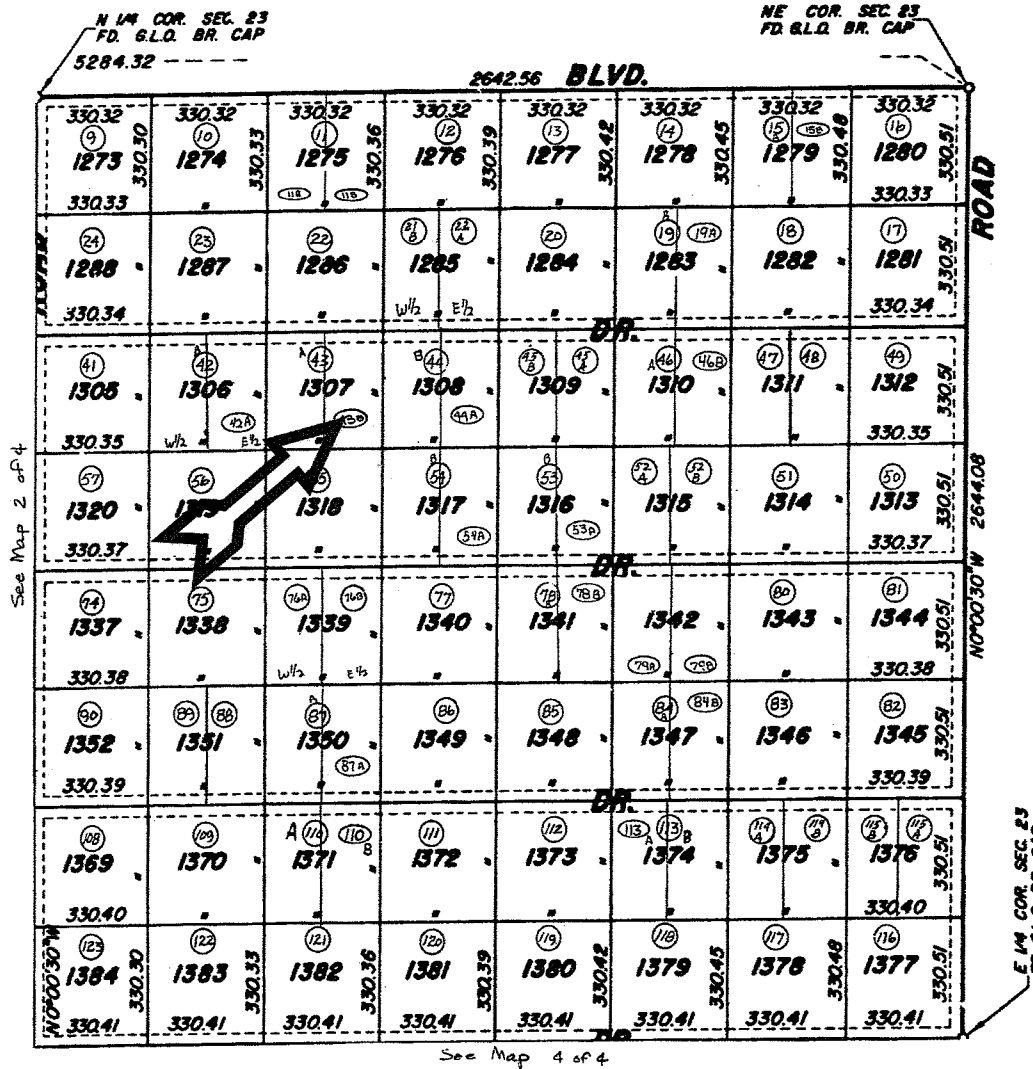
TOWNSHIP 25N RANGE 15W
SECTION 23NE.

BOOK 334

LAKE MEAD RANCHEROS UNIT 6

MAP 05

1 of 4
Code 0400



SCALE 1" = 300'

25N-15W-23NE,

Aug. 9, 1971

MOHAVE COUNTY ASSESSOR
1963